

# **Siedlce University of Natural Sciences and Humanities**

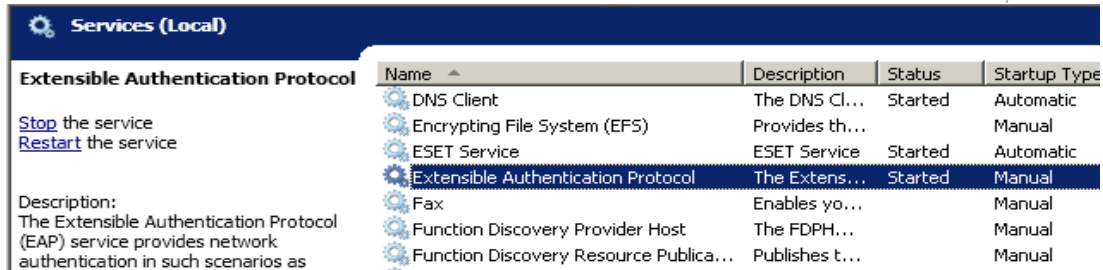
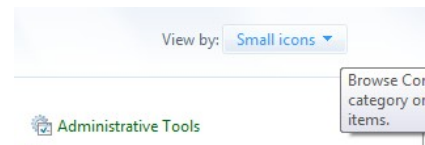
Guest Internet access manual

Siedlce 2013

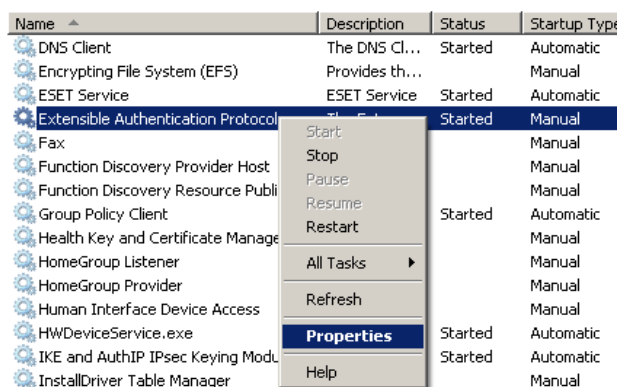
## Windows platform specification. (Windows 7)

There are two possibilities to get access to the Internet in our University. Wired and wireless. In all cases you need to run Extensible Authentication Protocol (EAP) service on your computer.

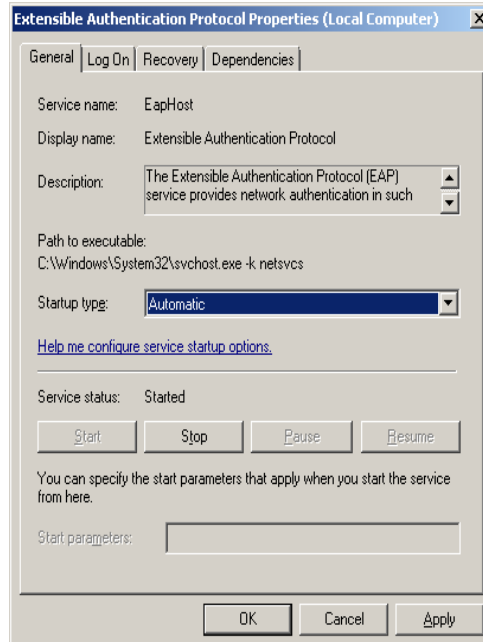
1. Enter to the Control Panel.
2. Set View by option on small or large icons.
3. Chose Administrative tools.
4. Chose Services.



5. Find Extensible Authentication Protocol service, use right mouse button to get to the properties.



6. Change startup type to Automatic.



7. If service status is stopped click on Start button.
8. Service should start now.

Configuring wired network settings.

You need to run Wired AutoConfig service on your computer.

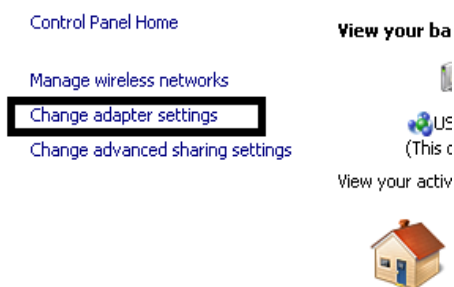
1. Enter to the Control Panel.
2. Set View by option on small or large icons.
3. Chose Administrative tools
4. Chose Services.
5. Find Wired AutoConfig service. Use right mouse button to get to the properties.

Name	Description	Status	Startup Type	Log On As
Windows Search	Provides c...	Started	Automatic (D...	Local System
Windows Time	Maintains d...	Started	Manual	Local Service
Windows Update	Enables th...	Started	Automatic (D...	Local System
WinHTTP Web Proxy Auto-Discovery...	WinHTTP i...		Manual	Local Service
Wired AutoConfig	The Wired ...	Started	Automatic	Local System
WLAN AutoConfig	The WLAN...	Started	Automatic	Local System
WMI Performance Adapter	Provides p...		Manual	Local System
Workstation	Creates an...	Started	Automatic	Network S...
WWAN AutoConfig	This servic...	Started	Automatic	Local Service

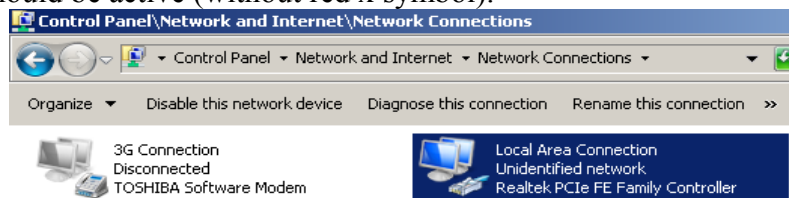
6. Change startup type to Automatic.
7. If service status is stopped click on Start button.
8. Service should start.
9. Connect ethernet cable into the your computer and into the ethernet socket.
10. Enter to the Control Panel.



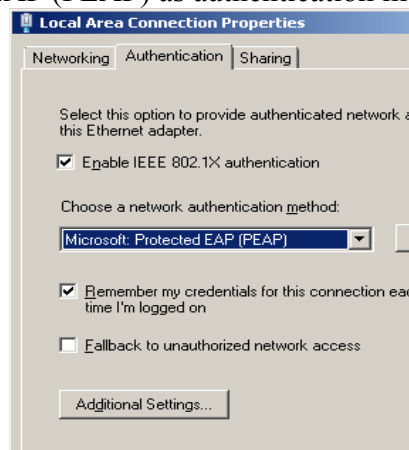
11. Chose Network and Sharing Center.
12. Chose Change adapter settings.



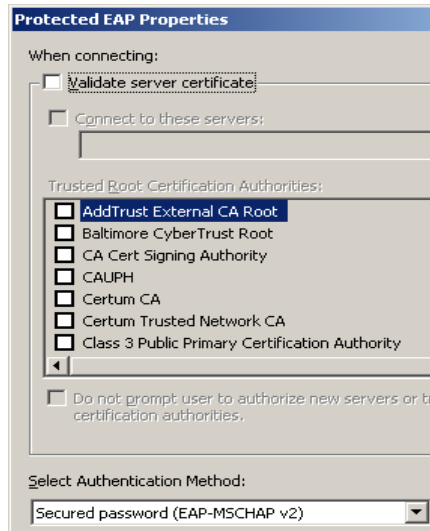
13. Find Local Area Connection icon. If you have connected your computer with ethernet socket connection should be active (without red x symbol).



14. Mark it by left mouse button, use right mouse button to get to the properties.
15. Find Authentication tab. (If it is not present check if Wired AuthConfig and EAP service are running).
16. Check Enable IEEE 802.1x authentication.
17. Chose Microsoft protected EAP (PEAP) as authentication method. Click Settings button.



18. Uncheck Validate server certificate.



19. Click Configure on right side of “Select authentication method”

20. Uncheck “Automatically use my Windows logon ....”

21. Click OK button.

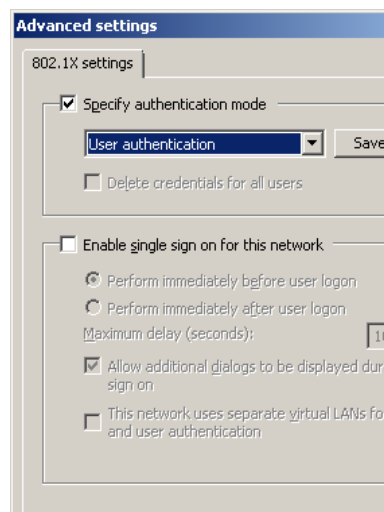
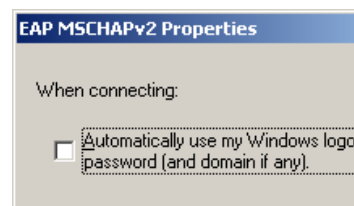
22. Click OK button.

23. On Security tab click Additional settings.

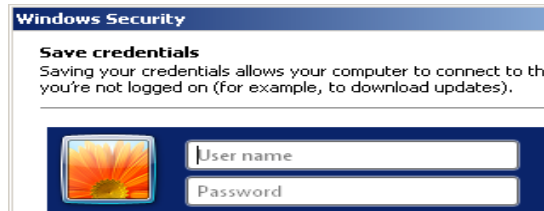
24. On 802.1x tab check Specify authentication mode.

25. Chose user authentication

26. Click Save credentials.



9. Enter your login and password.



10. Click OK button.

11. Click OK button.

12. Click OK button.

13. Click Close button.

14. Replug your ethernet cable.

15. You should have connection to the Internet.

After succesfull connection to the network, you need to wait approx. 5 minutes. Internet's gateway firewall needs to be reload. It happens every hour in 1,6,11,16,21,26,31,36,41,46,51,56 minutes.